

FACT SHEET



Nexus Resort & Spa Karambunai, Borneo Island's largest five-star resort, pleasantly combines discrete luxury and authentic Sabahan hospitality. The resort features award-winning 18-hole championship golf course, exclusive Borneo Spa, international standard meeting facilities, a 6km immaculate white sandy beach with uninterrupted view of the South China Sea; the resort is also reputed as having Malaysia's longest private beach.

LOCATION

Uniquely situated in an area of 3,335 acres, Nexus Resort & Spa Karambunai enjoys an idyllic beach front location, nestled in a sanctuary of lush tropical jungle on the Karambunai peninsula. The resort is within half-hour driving time to city centre, central to local nature attractions and less than two-hours from Mt Kinabalu Park.

Distances: _____

Kota Kinabalu City Centre:	28km
Kota Kinabalu International Airport:	38km
Sepangar Port:	5km
Mt Kinabalu Park UNESCO World Heritage Site:	80km

ACCOMMODATION

485 well-appointed guestrooms, exclusive club rooms, spacious suites and exquisite villas; each decorated with a blend of contemporary and indigenous designs.

Room Type	Units	Size
Ocean		
Ocean Panorama Deluxe	153	42.5sqm
Ocean Panorama Premier	90	42.5sqm
Borneo		
Nexus Club	45	42.5sqm
Nexus Club Executive Suite	8	85.0sqm
Borneo Garden Deluxe	183	42.5sqm
Luxury Villas		
Royal Villa (3 bedrooms)	2	315.0sqm
Presidential Villa	4	218.0sqm

Check-in: 2.00pm / Check-out: 12.00pm

SERVICES & FACILITIES

- Daily housekeeping service
- Airport limousine / car rental service
- Daily city shuttle service
- Tour desks for sightseeing tours
- 24-hours in-room dining
- Same-day laundry and dry-cleaning service
- Babysitting service
- Foreign currency exchange
- Gift shop/mini-mart
- Complimentary parking

RECREATION FACILITIES

- Borneo Spa – rejuvenate with a massage at a beach cabana or indulge in signature treatments in the tranquillity of a therapy room. Complimentary use of Sauna, Steam room, Jacuzzi and pool with all treatments
- 18-hole, par 72 championship golf course – driving range, putting and chipping green, buggy and equipment rental
- 6-kilometre beachfront – surfboard, bodyboard, sea-kayak, windsurf, catamaran and introductory surfing experience available

ALL ACCOMMODATION OFFER:

- Individually controlled air-conditioning
- Private balconies or terrace
- In-room electronic safe deposit box
- Tea/coffee making facilities
- Hairdryer
- Bathroom with deep bathtub and standing showerstall
- Bathrobes and slippers
- Alarm clock
- Complimentary drinking water
- Complimentary guest toiletries
- Satellite TV, movie channels
- DVD movies available
- Dual-line, IDD telephone and computer dataport
- Butler service (Royal Villas)

NEXUS CLUB

53 sea-facing rooms and suites of Borneo Wing have been appointed exclusively for Nexus Club rooms; 8 Executive Suites and 45 Club Deluxe. These private Club Rooms privileges include:

- Welcome fruit basket
- Complimentary WiFi in Club Rooms
- Personalised check-in and check-out
- Complimentary laundry service for 3 pieces per day
- 20% discount on spa treatments, laundry, food and non-alcoholic beverages
- Access to Nexus Club Lounge benefits
- Reserved breakfast venue for Club Room guests
- Evening pre-dinner drinks and all-day tea and coffee

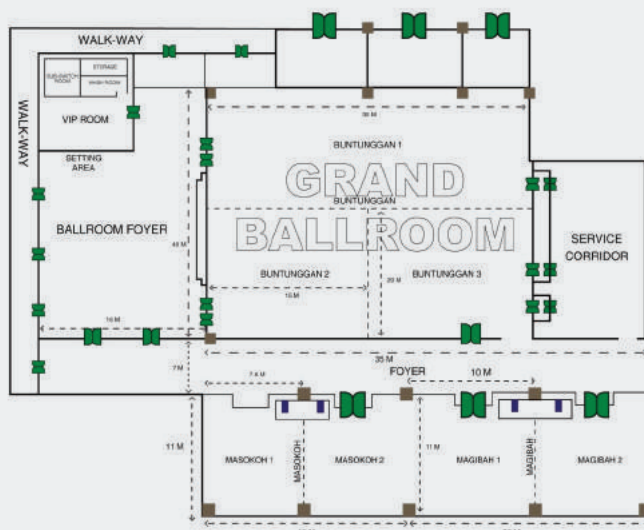
- Outdoor free-form swimming pool, children's wading pool and Jacuzzi, Squash court, tennis court, beach volleyball court
- Nexie Club – children's activity centre, playroom, outdoor playground and daily programmes
- Fully-equipped gymnasium, indoor recreation centre with pool tables, dartboard and board games
- Guided nature trail hiking and bicycle rides

RESTAURANTS & BARS

Venue	Capacity	Location	Cuisine
The Penyu	200	Level 1 Borneo Wing	Casual dining and International
The Kingfisher	160	Level 1 Poolside	Malaysian and regional
Olives	50	Level 1 Ocean Wing	Mediterranean
Noble House	120	Level 1 Ocean Wing	Cantonese and dim sum
Sunset Bar & Grill	120	Beachfront Borneo Wing	Intercontinental and beverages
Beach Bar (late April)	30	Beachfront Ocean Wing	Snacks and beverages
Splashes	40	Poolside	Intercontinental
Horizon Lounge	50	Lobby level	Snacks and beverages
Darlin Darlin Pub	60	Level 1 Ocean Wing	Beverages
Seoul Fairway	60	Golf Club	Korean
Muffins	20	Lobby level	Bakery

MEETINGS & EVENTS

Getting down to business or pleasure at Nexus Resort & Spa Karambunai is hassle-free for any event organiser. Recognised as a convention centre with the best layout in Kota Kinabalu, the flexible spaces are fully equipped for staging events catering up to 1,750 theatre-style seating, 930 banquet style or intimate gatherings in a private setting.



Function Room	Dimension(m)	Reception	Theatre	Banquet	Classroom	U-Shape
Buntunggan Grand Ballroom	30 x 40	1000	1400	650	700	210
Buntunggan 1	30 x 20	600	500	300	250	90
Buntunggan 2	15 x 20	300	250	150	160	60
Buntunggan 3	15 x 20	300	250	150	160	60
Ballroom Foyer	15 x 40	400	350	250	200	N/A
Masokoh	11 x 15	100	150	80	84	40
Masokoh 1	11 x 7.5	50	70	40	45	25
Masokoh 2	11 x 7.5	50	70	40	45	25
Foyer	35 x 7.5	150	N/A	120	N/A	N/A
Magibah	11 x 20	150	200	100	90	45
Magibah 1	11 x 10	80	80	50	56	30
Magibah 2	11 x 10	80	80	50	50	35
Foyer	07 x 35	N/A	N/A	120	N/A	N/A

NEXUS RESORT & SPA KARAMBUNAI

Off Jalan Sepangar Bay, Locked Bag 100, 88993 Kota Kinabalu, Sabah, Malaysia

Phone: +6088 480 888 Fax: +6088 480 999 Email: info@nexusresort.com Website: www.nexusresort.com

Kuala Lumpur Sales Office

Address: 1st floor No.118, Jalan Semangat 46300, Petaling Jaya, Selangor Darul Ehsan

Phone: +603 7955 5501 Fax: +603 7955 5509 Email: klsales@nexusresort.com Website: www.nexusresort.com